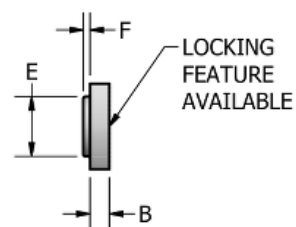
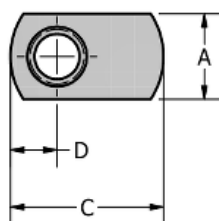


Spot Weld Nut - Single Tab: SN 1109



Thread Size	#6-32
Width (in)	7/16
Thickness (in)	3/32
Length (in)	5/8
A (in)	0.438
Tol A (in)	+0.015 / -0.005
B (in)	0.094
Tol B (in)	+0.003 / -0.003
C (in)	0.625
Tol C (in)	+0.015 / -0.015
D (in)	0.187
Tol D (in)	+0.015 / -0.015
E (in)	0.188
Tol E (in)	+0.010 / -0.010
F (in)	0.030
Hole In Sheet (in)	0.203
Material	C1010 High-Welding Quality, Low Carbon Steel
Finish	Plain, Unless Specified
Threads	Unified Standard Class 2B ASME B 1.1-2003



DISTRIBUTED BY



advancecomponents.com

972-446-5500